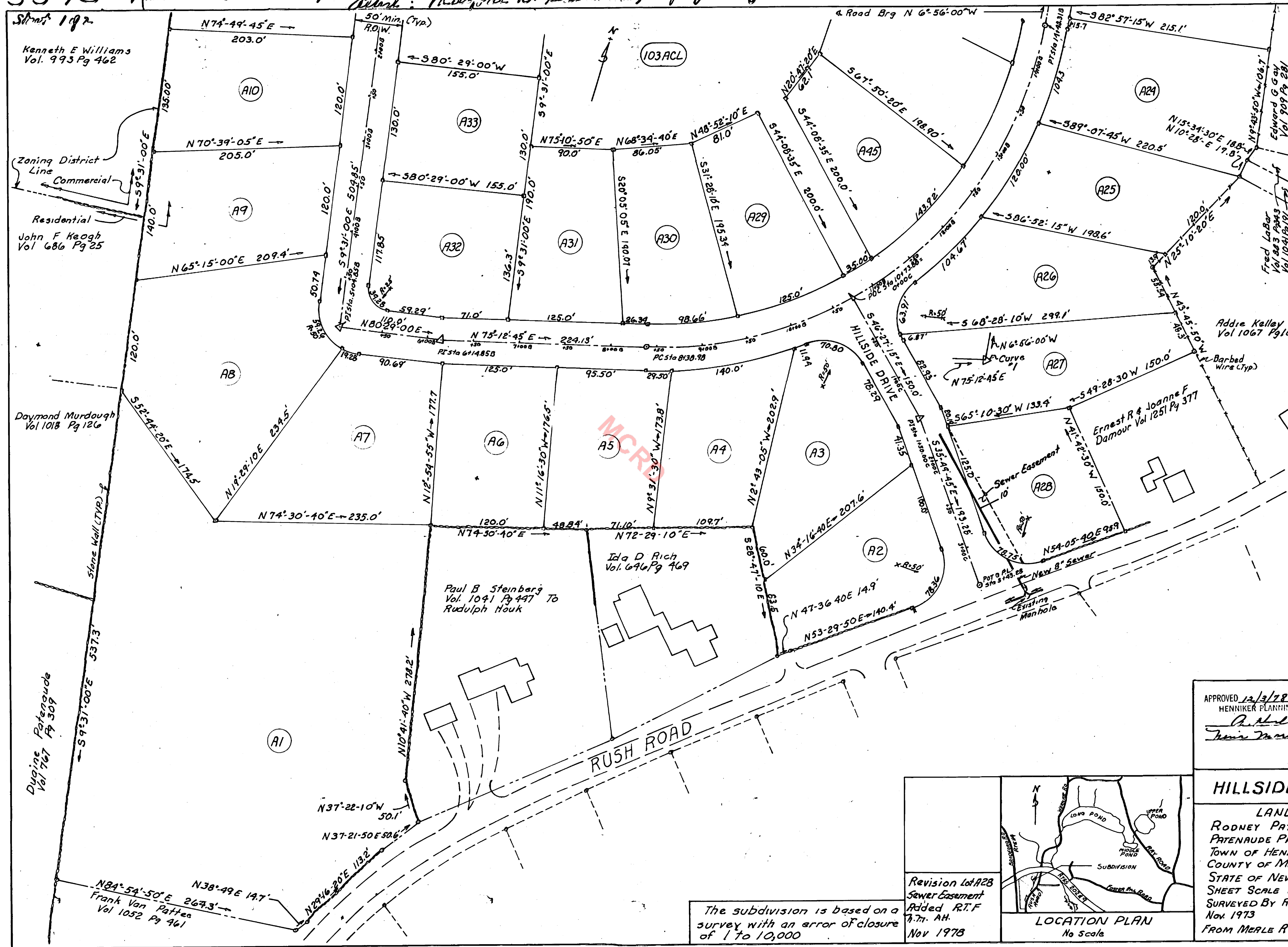


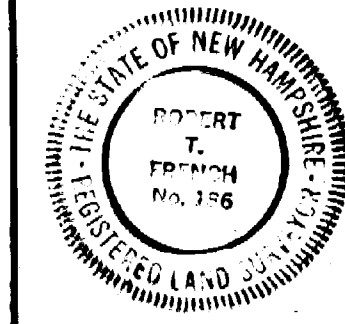
5575 Record Dec. 4, 12-50 P.M. 1978
 Survey: *Marjorie B. Hildebrand, Deputy Registrar*



LOT SIZE		
LOT NO.	SQ FT	ACRES
103A1	157,100	3.607
A2	22,125	0.515
A3	25,375	0.583
A4	21,775	0.500
A5	21,350	0.490
A6	21,650	0.497
A7	32,087	0.737
A8	43,000	0.987
A9	26,250	0.603
A10	23,750	0.591
A21	29,800	0.666
A25	22,925	0.526
A26	25,100	0.576
A27	24,375	0.559
A28	21,825	0.501
A29	20,575	0.472
A30	20,475	0.470
A31	20,350	0.467
A32	21,775	0.500
A33	20,150	0.463
A45	20,400	0.468

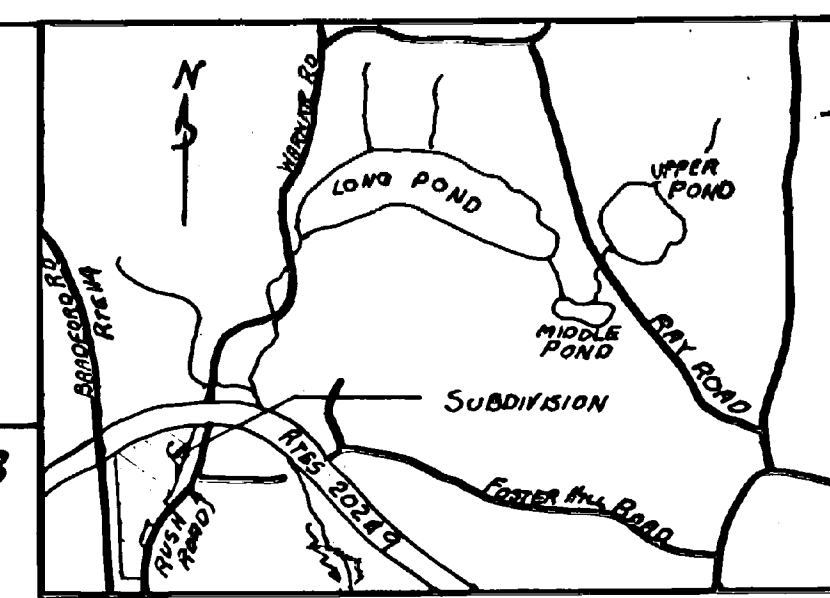
Curve Data #1
 $\Delta = 97^{\circ}51'15''$
 $R = 425'$
 $T = 370.40$
 $E = 138.75$
 $LC = 609.33$

APPROVED 12/3/78 #182
 HENNIKER PLANNING BOARD
Robert T. French Chairman
Ann M. Mason Secretary



HILLSIDE SUBDIVISION

LAND OF
 RODNEY PATENAUDE DBA
 PATENAUDE PROPERTIES
 TOWN OF HENNIKER
 COUNTY OF MERRIMACK
 STATE OF NEW HAMPSHIRE
 SHEET SCALE 1"=50'
 SURVEYED BY ROBERT T. FRENCH P.E. & R.L.S.
 Nov. 1973
 FROM MERLE R. PATENAUDE



Revision Lot A28
 Sewer Easement
 Added R.T.F.
 7.77. AM.
 Nov 1973

The subdivision is based on a survey with an error of closure of 1 To 10,000

5575 Record Dec. 4, 12.50 P.M. 1978
 Attest: *Margaret B. Robinson, Deputy Registrar.*

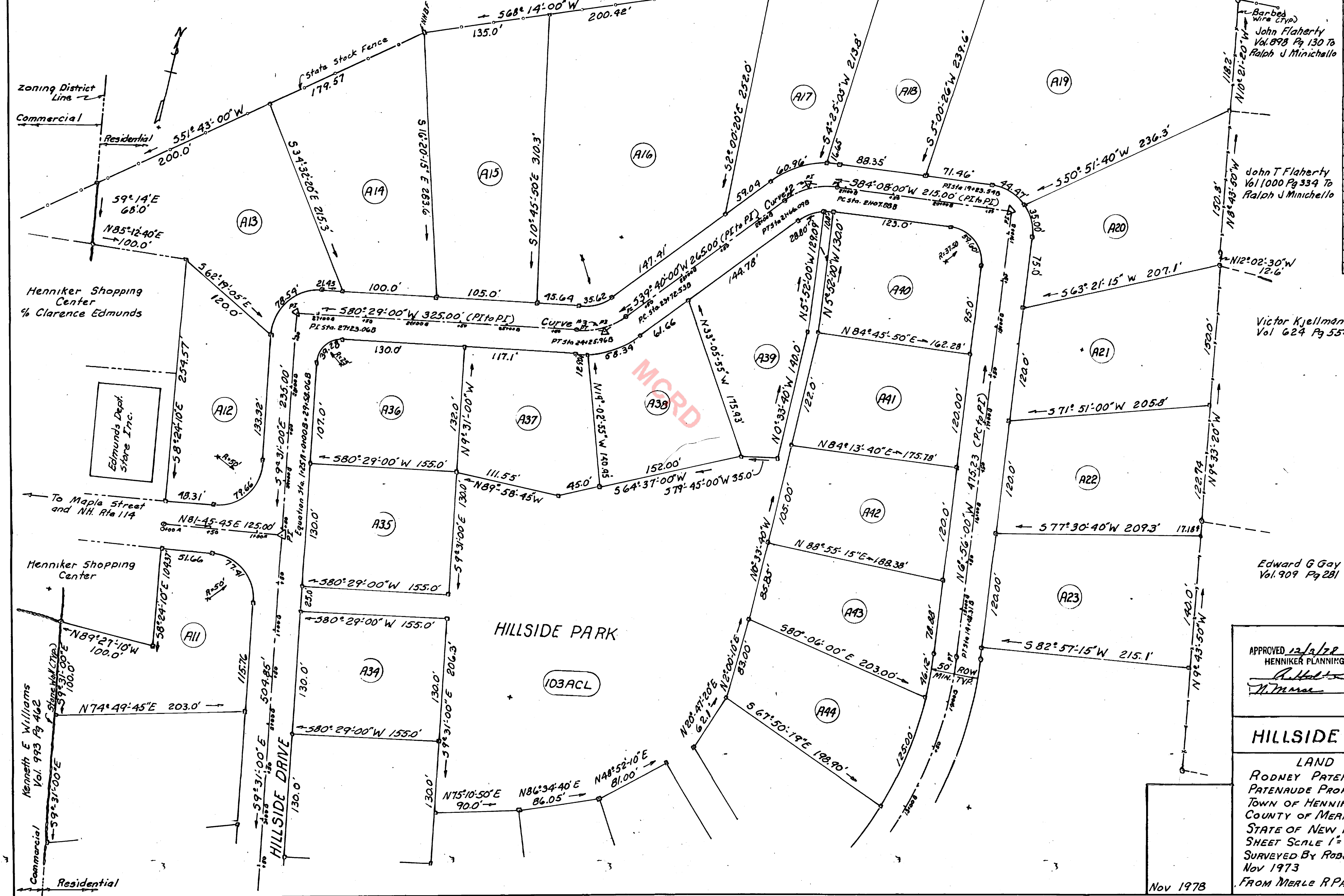
CURVE DATA

Curve No.	Δ	R	T	L.C.
1	97°51'-15"	425'	370.40	609.33
2	44°28'-00"	75'	30.66	58.21
3	40°49'-00"	75'	27.90	53.43

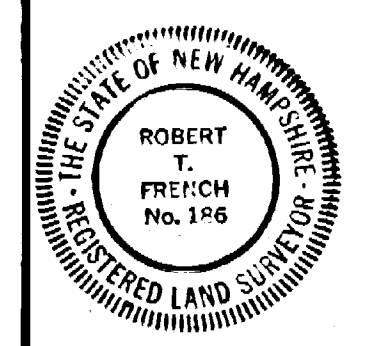
State of New Hampshire
 ROW US 202 & NH9

LQT SIZE

LOT NO.	SQ FT	ACRES
103A11	25,625	0.588
A12	21,050	0.484
A13	33,850	0.777
A14	33,375	0.766
A15	35,300	0.810
A16	61,250	1.407
A17	20,675	0.475
A18	23,525	0.540
A19	57,850	1.320
A20	27,000	0.620
A21	26,950	0.619
A22	26,725	0.614
A23	27,530	0.632
A34	20,150	0.463
A35	20,150	0.463
A36	20,325	0.467
A37	20,175	0.463
A38	20,225	0.464
A39	20,775	0.477
A40	20,825	0.478
A41	20,400	0.469
A42	20,425	0.469
A43	20,450	0.469
A44	20,775	0.477
HILLSIDE PARK		
103ACL	117,825	2.705



APPROVED 12/2/78 4182
 HENNIKER PLANNING BOARD
 Chairman: *[Signature]*
 Secretary: *[Signature]*



HILLSIDE SUBDIVISION

LAND OF
 RODNEY PATENAUDE DBA
 PATENAUDE PROPERTIES
 TOWN OF HENNIKER
 COUNTY OF MERRIMACK
 STATE OF NEW HAMPSHIRE
 SHEET SCALE 1"=50'
 SURVEYED BY ROBERT T. FRENCH P.E. & R.L.S.
 Nov 1973
 FROM MERLE R. PATENAUDE

Nov 1978

2 OF 2